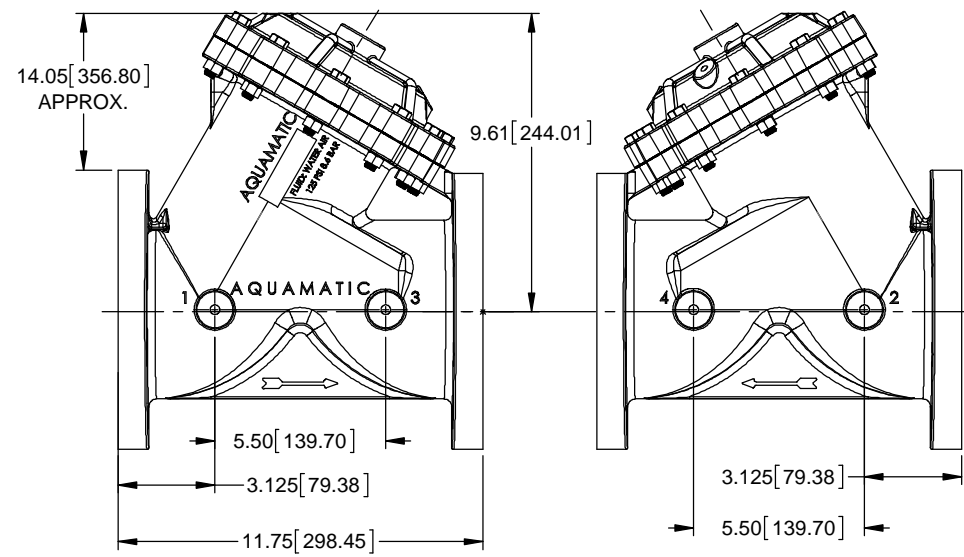
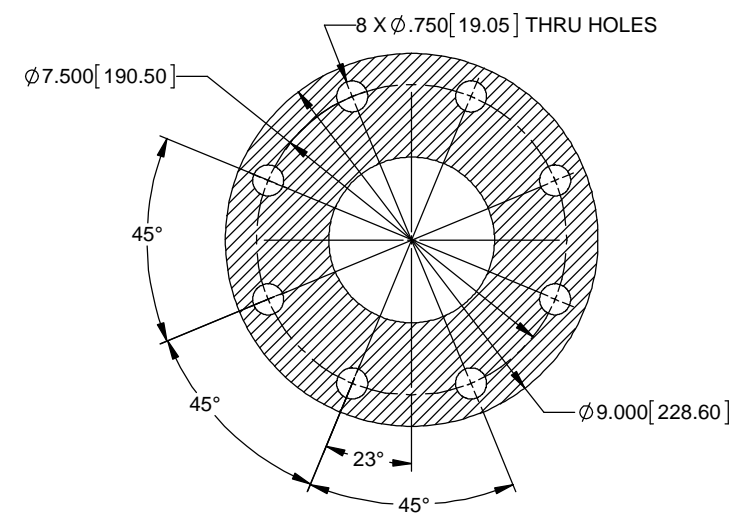


- NOTE:
 1. AMERICAN NATIONAL STANDARD TAPER PIPE THREDS (NPT) PER ANSI B2.1-1968
 2. VALVES AVAILABLE WITH B.S.P. END CONNECTIONS.



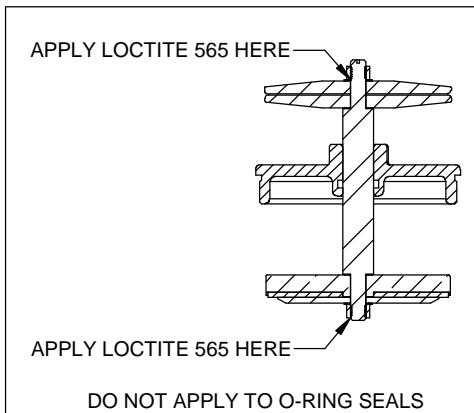
ASSEMBLY TOOLS	
DESCRIPTION	PART NO.
FOR INSTALLATION & REMOVAL OF SHAFT GUIDE (ITEM #10) (NOT SHOWN)	1-1/4" HEX SOCKET

TORQUE TABLE		
ITEM #	DESCRIPTION	TORQUED TO (+/- 10%)
2	SEAT	400 IN/LBS (33 FT/LBS)
3	UPPER NUT	140 IN/LBS
3	LOWER NUT	215 IN/LBS
10	GUIDE, SHAFT	500 IN/LBS (41.6 FT/LBS)
13 & 15	NUT, & CAP SCREW	140 IN/LBS



AMERICAN FLANGE PER A.S.A. 16.1 CLASS 125
 METRIC FLANGE PER BS 4504, DIN 10 & ISO R 2054

FLANGE STYLE	A	B	C
AMERICAN	9.000	7.500	.750
METRIC	229 MM	180 MM	18 MM

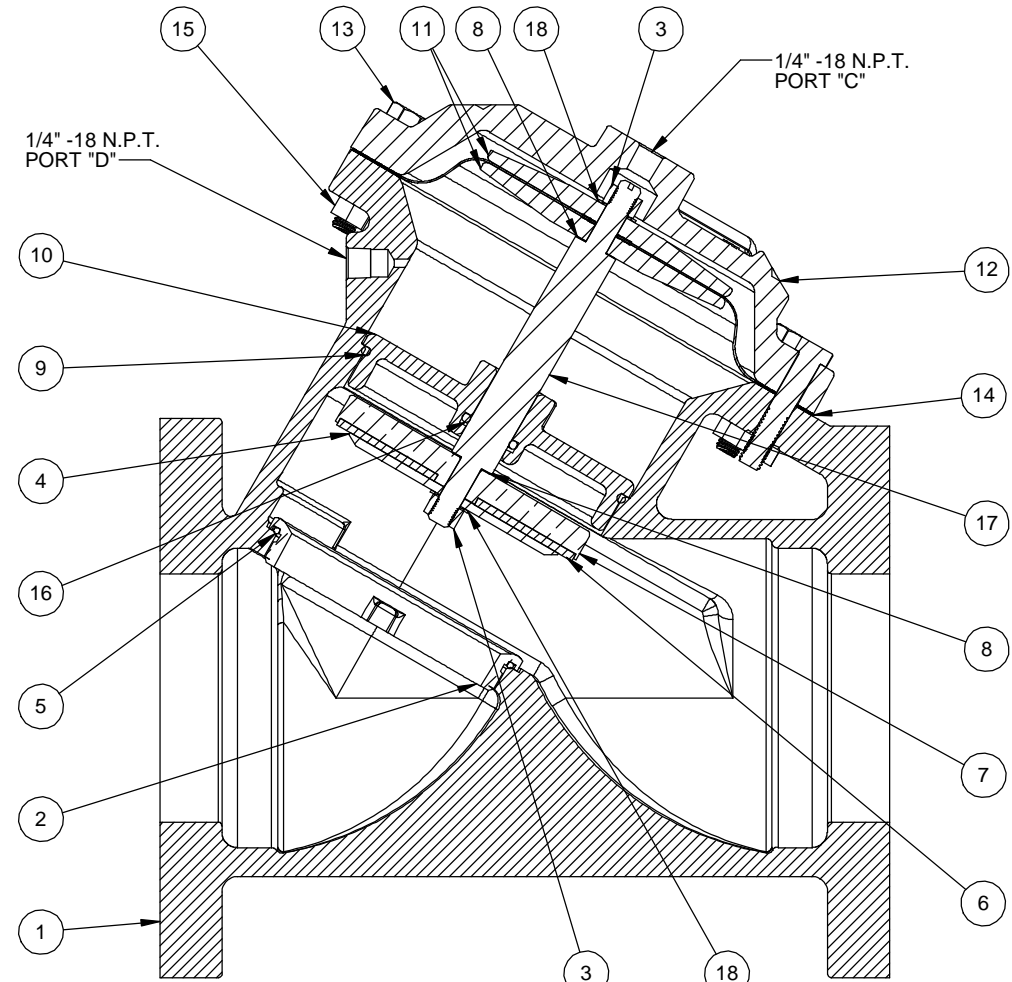


REVISIONS					
ZONE	ECN	REV.	DESCRIPTION	DATE	APP'D
	101085	K	REDRAWN IN SOLIDWORKS, FORM NO. NOW DWG NUMBER 1-WAS DWG #1084023	04MAR14	TJM
	101085	L	1-ITEM #17 WAS: 1074578, 2-ITEM #25 WAS: 1074581	27AUG14	TJM
	104610	M	1-ADD'D: ITEM#18-1073591, 2-#27 WAS: 1074430, 3-ADD'D: TORQUE TABLES	11MAY15	TJM

ITEM NO.	DESCRIPTION	STD	PART NUMBER	QTY.
1	BODY, 428, CI, 4.00, ISO	*	1074522	1
2	SEAT, 428, BRASS	*	1074585	1
3	NUT, HEX, 3/8-24, SS	*	3001990	2
4	PLATE, DISC, 428, SS	*	43734	1
5	O-RING (NITRILE), 2-156	*	1071697	1
	O-RING, EPDM -156		1071739	1
	O-RING, -156, FKM		1071811	1
6	DISC,	*	1074568	1
	DISC, E.P.D.M.		1074570	1
	DISC, FKM		1074573	1
	DISC, HYCAR		1074571	1
7	DISC HOLDER, ALUM-BRNZE	*	1074587	1
8	GASKET, CDA 110 COPPER	*	103950	2
9	O-RING (NITRILE), 2-245	*	1071711	1
	O-RING, EPDM -245		1071759	1
	O-RING, -245, FKM		1071832	1
10	GUIDE, SHAFT, 428, BRASS, MCHD	*	1074563	1
11	PLATE, DIAPHRAGM, 428, SS, MACH	*	43759	2
12	CAP, 428, NPT, CI	*	1074532	1
13	HEX HEAD CAP SCREW,	*	1072406	11
14	DIAPHRAGM SERIES 428,	*	1074557	1
	DIAPHRAGM SERIES 428,		1074559	1
15	HEX NUT, 3/8-16	*	1071658	11
16	O-RING (NITRILE),	*	1071702	1
	O-RING, 2-210		1242718	1
	O-RING, 2-210		1242394	1
17	SHAFT, 428	*	1074579	1
18	LOCKWASHER, 3/8", INTERNAL	*	1073591	2

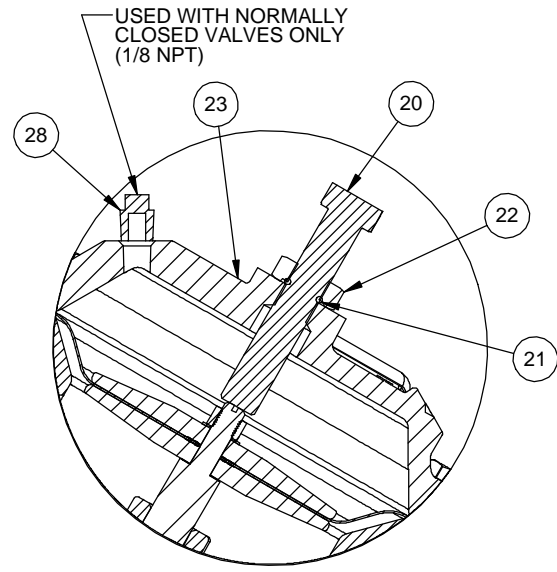
REPAIR PARTS KITS			
DESCRIPTION	PART NO.		
DIAPHRAGM & SEALS KIT CONSISTS OF ITEM NO'S 3(2), 5, 6, 8(2), 9, 14, 16	1070073 (428-RA)	1070086 (428-RAE)	1070098 (428-RAV)
	BUNA N INCLUDES DIAPHRAGM 1074557 (428-FB)	E.P.D.M. INCLUDES DIAPHRAGM 1074557 (428-FB)	FKM INCLUDES DIAPHRAGM 1074559 (428-FV)
	1070123 (428-RF)		
INT. PARTS KIT (NORM. OPEN) CONSISTS OF STANDARD ITEM NO'S 4, 7, 10, 11(2), 17, 18	1074585 (428-MAO)		
SEAT (ITEM NO. 2)	1074585 (428-MAO)		

SEE REVERSE SIDE FOR CONFIGURATION OPTIONS

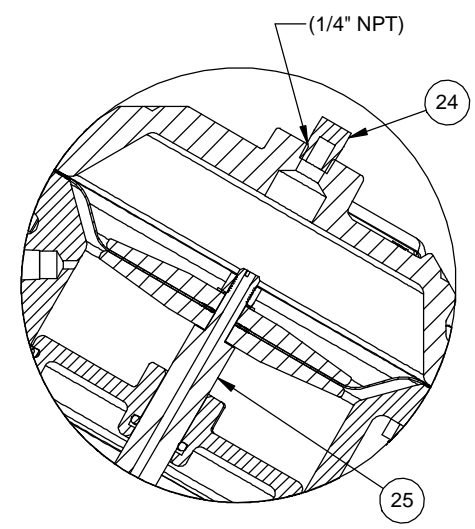


1070045 (V42K-3000-0000) (4" PIPE SIZE)
 NORMALLY OPEN (STANDARD)

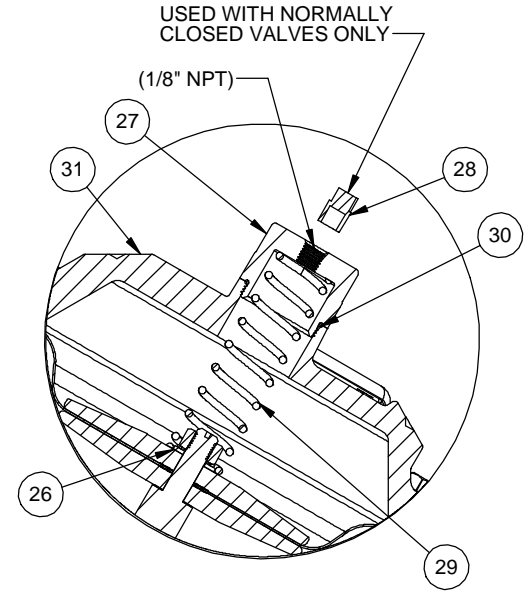
© 2016 AQ Matic Valve and Controls Company, Inc. All rights reserved.		THIRD ANGLE PROJECTION			16605 West Victor Rd New Berlin, WI 53151 262-326-0100 www.aq-matic.com
DO NOT SCALE DRAWING. DIMS. ARE IN INCHES [mm] INTERPRET DIMS AND TOLERANCES PER ASME Y14.5M -2009 UNLESS OTHERWISE SPECIFIED:		APPROVALS	DATE	TITLE CATALOG SHEET, 428 DIAPHRAGM VALVE STANDARD MODEL	
TOLERANCES: ANGLES: ±1° 1 PLACE .X: ±.015 [0.38] 2 PLACE .XX: ±.01 [0.3] 3 PLACE .XXX: ±.005 [0.13]		DRAWN SM	05/11	SIZE C	REV M
		APPROVED		DWG NO. 1077618	SCALE 1:4
				SHEET 1 OF 2	



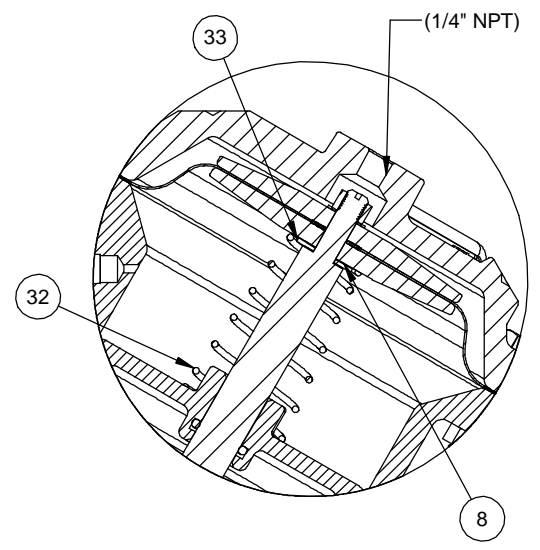
1073151 (V42K-3010-00000)
LIMIT STOP



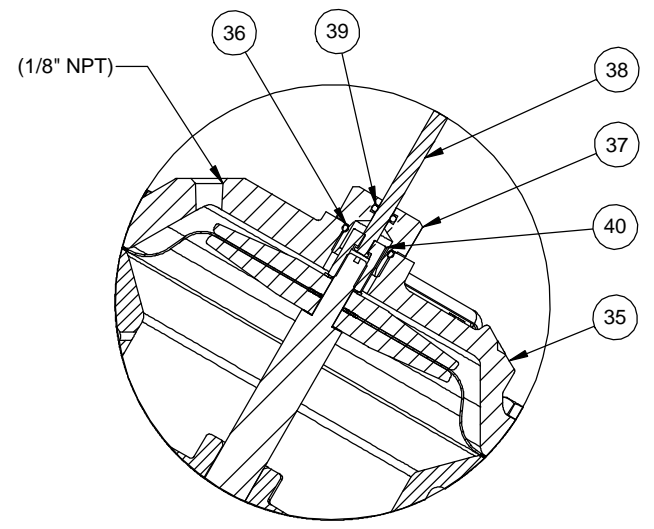
1073158 (V42K-3030-00000)
NORMALLY CLOSED



1073148 (V42K-3002-00000)
SPRING ASSIST CLOSED



1073146 (V42K-3001-00000)
SPRING ASSIST OPEN



1073156 (V42K-3021-00000)
POSITION INDICATOR

REVISIONS					
ZONE	ECN	REV.	DESCRIPTION	DATE	APPD
			SEE SHEET 1 FOR NOTES		

ITEM NO.	DESCRIPTION	STD	PART NUMBER	QTY.
LIMIT STOP MODEL				
20	SCREW, 5/8-18X3.50 HEX HD,	*	1072365	1
21	O-RING,2-112,NITRILE	*	1071690	1
22	NUT, LIMIT STOP	*	1074434	1
23	CAP, 428,LS, NPT, CI	*	1074542	1
NORMALLY CLOSED MODEL				
24	MALE PIPE PLUGS, PLATED STEEL	*	1071918	1
	MALE PIPE PLUGS, BRASS		1071904	1
25	SHAFT, 428 NORMALLY CLOSED	*	1074582	1
SPRING ASSIST CLOSED MODEL				
26	WASHER, CENTERING		1074530	1
27	NUT, SPRG RTNR, 425 & 465,SS	*	1074433	1
28	MALE PIPE PLUGS, PLATED STEEL	*	1071903	1
	MALE PIPE PLUGS, BRASS		1071917	1
29	SPRING, COMPRESSION	*	1074607	1
30	O-RING,2-025,NITRILE	*	1071677	1
31	CAP, 428, NPT, CI		1074540	1
SPRING ASSIST OPEN				
8	GASKET, CDA 110 COPPER	*	1073950	1
32	SPRING, COMPRESSION, 428,SAO	*	1074600	1
33	WASHER, BRASS		1074610	1
POSITION INDICATOR MODEL				
35	CAP, 428,CI,NPT,PI		1074549	1
36	O-RING,2-116,NITRILE		1071692	1
37	PI ROD GDE, V42, BRASS		1074121	1
38	SHAFT,428,SS,MACH		1074593	1
39	O-RING,2-106,NITRILE,TFLN CTD		1071688	1
40	NUT, TOP,428,PI		1074608	1

TORQUE TABLE		
ITEM #	DESCRIPTION	TORQUED TO (+/- 10%)
22	NUT, LIMIT STOP	140 IN/LBS
27	NUT, SPRG RETAINER	140 IN/LBS
37	PI ROD GUIDE	140 IN/LBS
40	NUT, TOP, 428, PI	140 IN/LBS

- NOTE:
- SPRING ASSIST CLOSED MODEL CANNOT BE COMBINED WITH LIMITED STOP OR POSITION INDICATOR MODELS.
 - VALVES AVAILABLE WITH B.S.P. END CONNECTIONS.

REPAIR PARTS KITS	
DESCRIPTION	PART NO.
INT. PARTS KIT (LIMITED STOP) CONSISTS OF STANDARD ITEM NO'S 20, 21, 22,	1074583 (428-LS)
INT. PARTS KIT (NORM. CLOSED) CONSISTS OF STANDARD ITEM NO'S 4, 7, 10, 11(2), 18, 25	1070134 (428-RG)
INT. PARTS KIT (SPRING ASSIST CLOSED) CONSISTS OF STANDARD ITEM NO'S 28, 29, 30	1074602 (428-SC)
INT. PARTS KIT (SPRING ASSIST OPEN) CONSISTS OF STANDARD ITEM NO'S 8, 32, 33	1074604 (428-SO)
INT. PARTS KIT (POSITION INDICATOR) CONSISTS OF STANDARD ITEM NO'S 35 THRU 39	1074591 (428-PI)

CONVERSION KITS	
DESCRIPTION	PART NO.
CONVERSION KIT (LIMITED STOP) CONSISTS OF STANDARD ITEM NO'S 20, 21, 22, 23	1074584 (428-LSC)
CONVERSION KIT (SPRING ASSIST CLOSED) CONSISTS OF STANDARD ITEM NO'S 26 THRU 31	1074603 (428-SCC)
CONVERSION KIT (SPRING ASSIST OPEN) CONSISTS OF STANDARD ITEM NO'S 8, 32, 33	1074606 (428-SOC)
CONVERSION KIT (POSITION INDICATOR) CONSISTS OF STANDARD ITEM NO'S 34 THRU 39	1074592 (428-PIC)

SEE REVERSE SIDE FOR
STANDARD NORMALLY OPEN MODEL

<small>© 2018 AQ Matic Valve and Controls Company, Inc. All rights reserved.</small> <small>DO NOT SCALE DRAWING. DIMS. ARE IN INCHES [mm] INTERPRET DIMS AND TOLERANCES PER ASME Y14.5M -2009 UNLESS OTHERWISE SPECIFIED:</small> <small>TOLERANCES: ANGLES: ± 1° 1 PLACE .X: ± 0.15 [0.38] 2 PLACE .XX: ± 0.1 [0.3] 3 PLACE .XXX: ± 0.05 [0.13]</small>	THIRD ANGLE PROJECTION			<small>16605 West Victor Rd New Berlin, WI 53151 262-326-0100 www.aq-matic.com</small>	
	APPROVALS			DATE	TITLE
	DRAWN	SM	05/11	CATALOG SHEET, 428 DIAPHRAGM VALVE STANDARD MODEL	
	CHECKED			SIZE C DWG NO. 1077618	SCALE 1:4 SHEET 2 OF 2